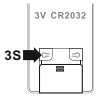


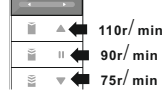
6.Adjust the speed

①



Press [channel setting] button 3 seconds, enter Speed adjustment mode, LED 110r/min.

②

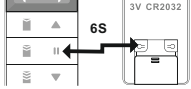


Press [Open] button 3 seconds, adjust to 110r/min.  
Press [Stop] button 3 seconds, adjust to 90r/min.  
Press [pause] button 3 seconds, adjust to 75r/min.  
Motor LED light flash 2times.

7. Custom working stroke

◆ Clear limit

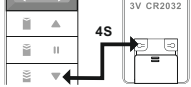
①



Long press [Channel setting]+[Stop] at the same time for 6s, clear all limits, motor shakes one time, Led light flash one time.


◆ Adjustment for down limit

①




At the same time, long press the remote control [Close]+[Channel setting] button for 4 seconds, the motor shakes one time, the motor LED indicator light is long on.

②



Make the curtain reach the desired position by pressing the remote control [Up] or [Down] button within 30 seconds.

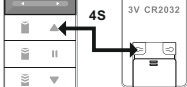
③



Press the remote control [Channel setting] button or press the motor [Programming] button to set the current position as the down limit point, the motor shakes one time, and the motor LED indicator light off.

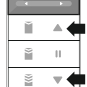
◆ Adjustment for up limit

①



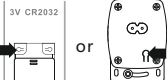
At the same time, long press the remote control [Channel setting]+[Up] button for 4 seconds, the motor shakes one time, the motor LED indicator light will be long on.

②



Make the curtain reach the desired position by pressing the remote control [Up] or [Down] button within 30 seconds.

③




Press the remote control [channel setting] button or press the motor [Programming] button to set the current position as the open limit point, The motor shakes one time, and the motor LED indicator light off.

8.Switch on/off the Pull to Start function

The Pull to Start funtion decides if you can let the curtain move automatically by pulling the curtain cloth or not.This function is enabled by default.


◆ Switch on

①



Press [Stop] and [Open] button for 4 seconds till the light on, the motor will shake shortly.


②



Short press [Channel Setting] button, motor vibration, then this function can be switched on successfully.

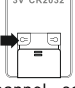
◆Switch off

①



Press [Stop] and [Close] button for 4 seconds till the light on, the motor will shake shortly.

②



Short Press [Channel setting] button, motor vibration, then this function can be switched off successfully.

Smart control instructions

◆connection method 1

Tmall Genie: When the device is in the state of distribution network, say to the Tmall Genie speaker: "Tmall Genie, find the device", patiently wait for the Tmall Genie to find the device, and connect the device, after the link is successful, you can customize the device name and location, you can control the device on the phone.

◆connection method 2

Tmall Genie: Press the motor [Learn code] key, release and press for 3 seconds until the indicator light flashes red slowly, enter the pairing mode; Voice command "Tmall Genie, discover the device", patiently wait for the Tmall Genie to find the device, and connect the device, after the connection is successful, you can customize the device name and location, you can control the device on the phone.

Tuya: Continuously press the motor [Learn code] button, release and hold down for 3 seconds until the blue light flashes, enter the pairing mode, open the Tuya APP, click "+" in the upper right corner, select "nearby devices" to find the motor, the motor enters the distribution network, patiently wait for the connection to be successful, you can control the use of the custom name.

◆Delete Pairing

- Method 1: Delete device in APP;
- Method 2: Factory reset;
- Method 3: Press motor "learning" button, release and then press again for 3 seconds until LED light flash 5 times, enter pair mode again.

Matters need attention

- Do not place batteries within reach of infants and young children.
- Do not put the battery into the fire and heating, decomposition, transformation.
- Do not damage the power cable or power plug.
- Do not touch the power plug with wet hands.

- This product is not suitable for the maintenance and use of persons with mobility difficulties, intellectual disabilities or mental disorders, or those who lack experience and common sense (including children). Use this product unless under the care or direction of a person responsible for their safety.
- Children should use this product under the care of family members to prevent it from being used as a toy.

Common faults

Serial number	Common fault	Solution
1	Motor not working	Check power supply
2	The remote control cannot be controlled.	1.Replace the remote control battery 2.Delete and reconnect the remote control
3	Remote control switch reverse	Change the direction of motor accoding to the manual
4	Always hitting or missing the edge	Motor is restored to factory Settings

Warranty description

In order to protect your legitimate rights and interests and relieve you of the worries of purchasing the machine, Guangdong Rex Intelligent Technology Co., Ltd. makes the following warranty service commitment to you, and provides you with standardized warranty service accordingly.

For users who purchase Raex electric curtain motor system, from the date of purchase (subject to the date of invoice). All products are guaranteed according to the warranty period indicated by each product.

Warranty period

- T200/T300/T400 series warranty period of 5 years;
- Opening and closing curtain motor (excluding battery opening and closing curtain motor) warranty for 5 years;
- Open and close curtain battery motor warranty 1 year;
- All controllers, remote control warranty 1 year.

Scope of exemption from warranty liability

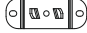
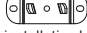


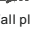
- Beyond the warranty period, no vouchers and valid bills, but can prove that the purchased goods within the warranty period except;
- Damage caused by improper use of users, including flooding, breaking, hard collision, human-caused printed circuit board burning;
- Damage caused by disassembly or maintenance without authorization of the company;
- The sealing machine label of the product is torn off or damaged, the equipment bar code label is torn off or blurred, and there are signs of alteration;
- Failure or damage caused by force majeure, such as earthquake, fire, lightning strike, high voltage breakdown.

The company has the final interpretation of the warranty terms of this card.



Electric Curtain Set  
Instruction Manual

Accessories list

	1.8-3m	2.3-4m	2.5-4.5m
 Large installation bracket	6	7	7
 Small installation bracket	4	6	6
 Ring	24	32	36
 Screw	20	36	36
 Wall plug	20	36	36

Different specifications of the track has different numbers of accessories.

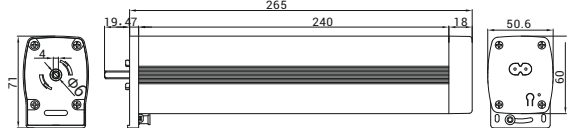
Product information

1.Track



Track model	P35
Specification	1.8-3m / 2.3-4m / 2.5-4.5m
Adapted motor	MP82
Loading capability	50Kg

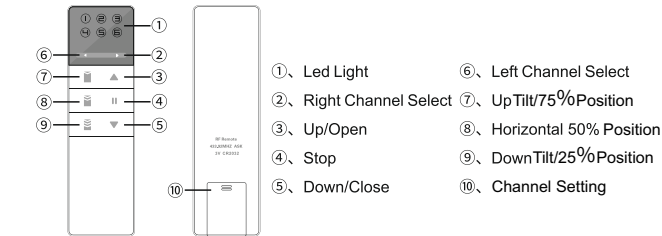
2.Motor



Motor Model	MP82		
Rated voltage	100-240V AC	Rated Speed	75/90/110 r/min adjustable
Rated frequency	50/60Hz	IP grade	IP41
Rated Torque	1.2N·m	Running time	S3 50%

Note: Default rotate speed is 75r/min.

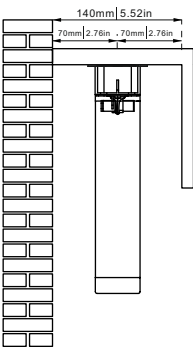
3.YR2118B Remote



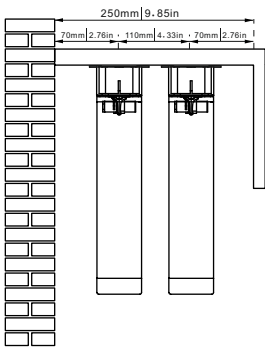
Installation instructions

1.Mounting dimension

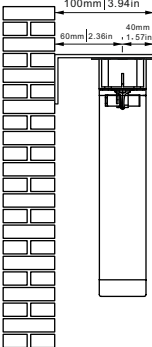
SINGLE TRACK TOP INSTALLATION



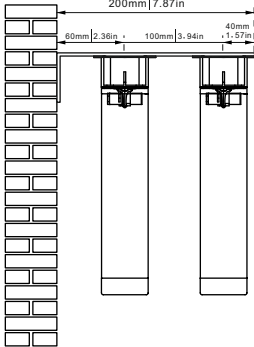
DOUBLE TRACK TOP INSTALLATION



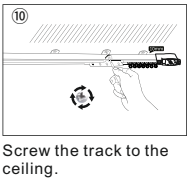
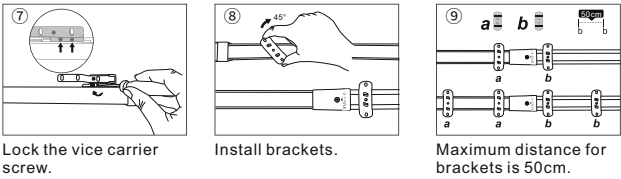
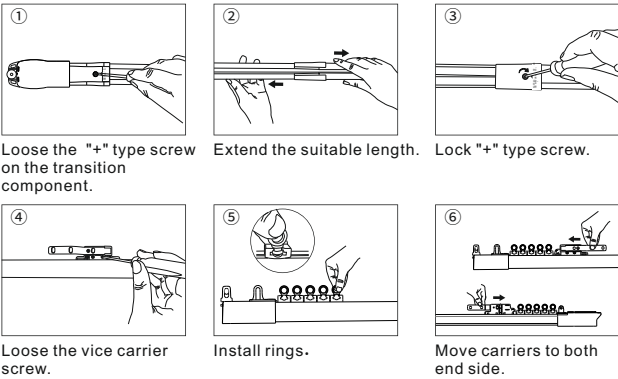
SINGLE TRACK SIDE INSTALLATION (OPTIONAL)



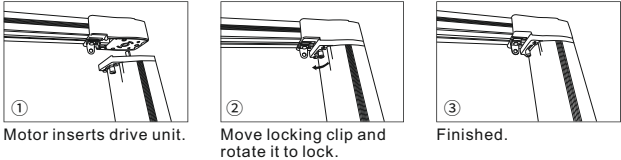
DOUBLE TRACK SIDE INSTALLATION (OPTIONAL)



2.Track installation procedures

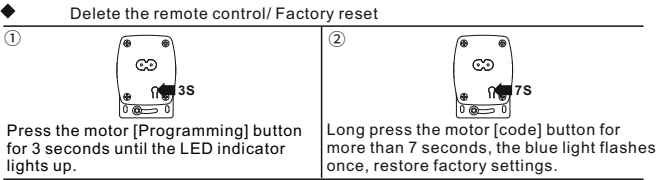
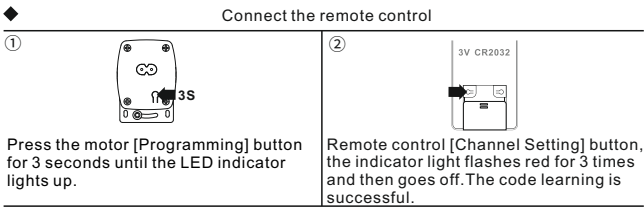


3.Motor installation

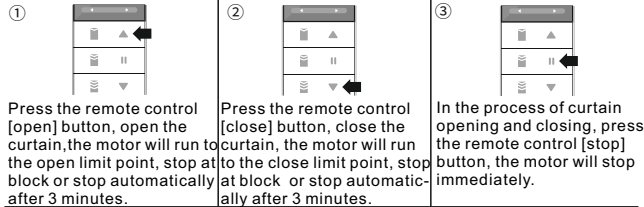


Remote control instructions

1. Connect or delete the remote control  
The remote control doesn't connected with the motor be default,you have to connect before using the electric curtain.

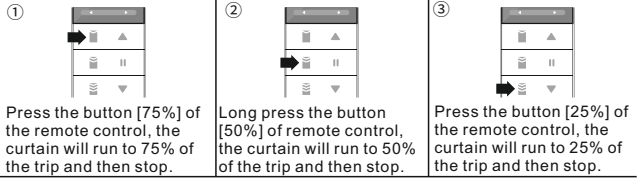


2.Open/Close/Stop



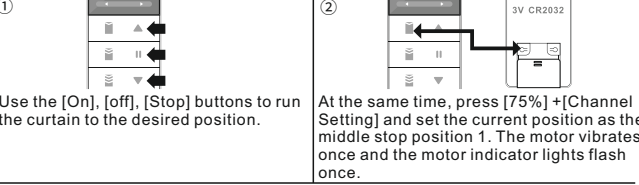
◆ Automatic working stroke setting  
After the motor is powered on fat the first time,the first opening and closing motion will automatically sets the working stroke by collision.

3.Percentage control

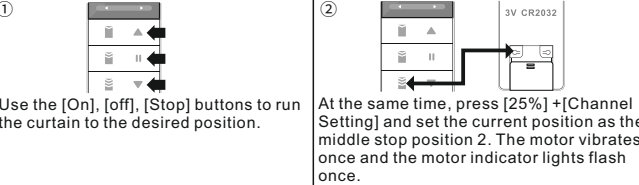


4.Custom the percentage control

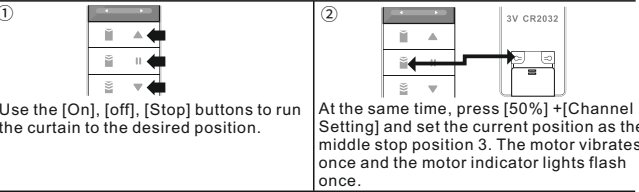
◆ Set the middle stop point 1



◆ Set the middle stop point 2

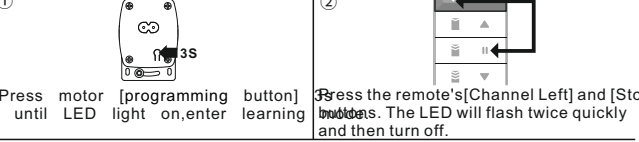


◆ Set the middle stop point 3



5.Direction setting

◆ Method 1



◆ Method 2 (Change direction by programming button )

