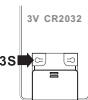


6.Adjust the speed

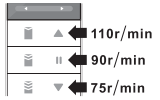
①



3S

Press [channel setting] button 3 seconds, enter Speed adjustment mode, LED light on.

②

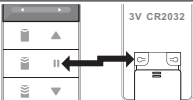


▲ 110r/min
|| 90r/min
▼ 75r/min

Press[Open]button 3 seconds,adjust to 110r/min.
Press [Stop] button 3 seconds, adjust to 90r/min.
Press[pause] button 3 seconds,adjust to 75r/min.
Motor LED light flash 2times.

7.Custom working stroke

◆ Clear limit

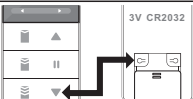


3V CR2032

Long press [Channel setting]+[Stop] at the same time for 6s,clear all limits,motor shakes one time,Led light flash one time.

◆ Adjustment for down limit


①



3V CR2032

At the same time,long press the remote control [Close]+[Channel setting] button for 4 seconds, the motor shakes one time, the motor LED indicator light is long on.


②



▲
||
▼

Make the curtain reach the desired position by pressing the remote control [Up] or [Down] button within 30 seconds.

③

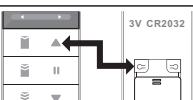


3V CR2032

Press the remote control [Channel setting] button or press the motor [Programming] button to set the current position as the down limit point, the motor shakes one time, and the motor LED indicator light off.

◆ Adjustment for up limit


①



3V CR2032

At the same time, long press the remote control [Channel setting]+[Up] button for 4 seconds,the motor shakes one time, the motor LED indicator light will be long on.


②



▲
||
▼

Make the curtain reach the desired position by pressing the remote control [Up] or [Down] button within 30 seconds.

③



3V CR2032


Press the remote control [channel setting] button or press the motor [Programming] button to set the current position as the open limit point, The motor shakes one time, and the motor LED indicator light off.

8.Switch on/off the Pull to Start function

The Pull to Start funtion decides if you can let the curtain move automatically by pulling the curtain cloth or not.This function is enabled by default.

◆ Switch on

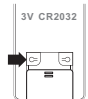
①



4S

Press [Stop] and [Open] button for 4 seconds till the light on, the motor will shake shortly.

②




3V CR2032

Short press [Channel Setting] button, motor vibration, then this function can be switched on successfully.

◆Switch off

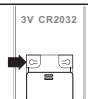
①



4S

Press [Stop] and [Close] button for 4 seconds till the light on, the motor will shake shortly.

②



3V CR2032

Short Press [Channel setting] button , motor vibration then this function can be switched off successfully.

Matters need attention

- Do not place batteries within reach of infants and young children.
- Do not put the battery into the fire and heating, decomposition, transformation.
- Do not damage the power cable or power plug.
- Do not touch the power plug with wet hands.

•This product is not suitable for the maintenance and use of persons with mobility difficulties, intellectual disabilities or mental disorders, or those who lack experience and common sense (including children). Use this product unless under the care or direction of a person responsible for their safety.

•Children should use this product under the care of family members to prevent it from being used as a toy.

Common faults

Serial number	Common fault	Solution
1	Motor not working	Check power supply
2	The remote control cannot be controlled.	1.Replace the remote control battery 2.Delete and reconnect the remote control
3	Remote control switch reverse	Change the direction of motor accoding to the manual
4	Always hitting or missing the edge	Motor is restored to factory Settings

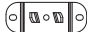




Electric Curtain Set
Instruction Manual

6

7

8

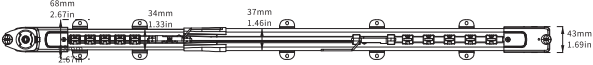
Accessories list

	1.8-3m	2.3-4m	2.5-4.5m
 Large installation bracket	6	7	7
 Small installation bracket	4	6	6
 Ring	24	32	36
 Screw	20	36	36
 Wall plug	20	36	36

Different specifications of the track has different numbers of accessories.

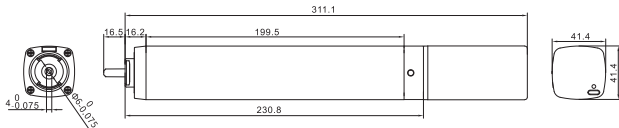
Product information

1.Track



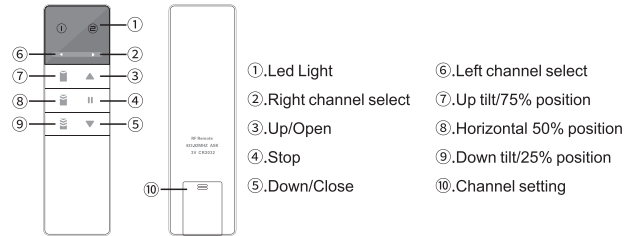
Track model	P35
Specification	1.8-3m / 2.3-4m / 2.5-4.5m
Adapted motor	ML40
Loading capability	50Kg

2.Motor



Motor Mode	ML40		
Rated voltage	12.6V DC	Rated speed	75r/min
Rated current	1.2A	IP grade	IP41
Rated torque	1.0N·m	Insulation grade	E
Battery capacity	2200mAh		

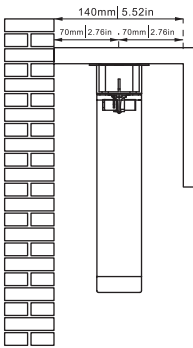
3.YR2188B Remote control



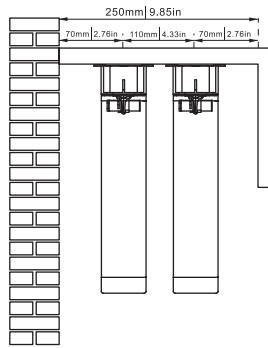
Installation instructions

1.Mounting dimension

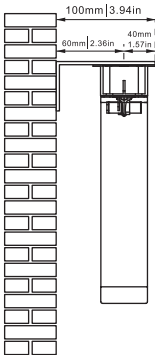
SINGLE TRACK TOP INSTALLATION



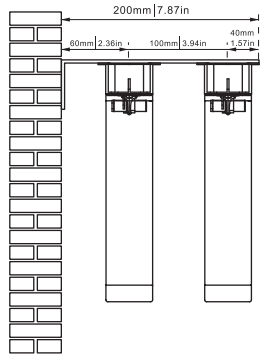
DOUBLE TRACK TOP INSTALLATION



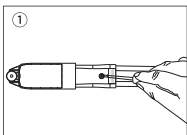
SINGLE TRACK SIDE INSTALLATION (OPTIONAL)



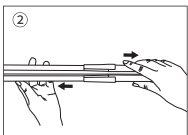
DOUBLE TRACK SIDE INSTALLATION (OPTIONAL)



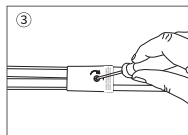
2.Track installation procedures



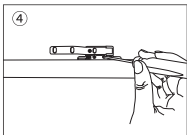
Loose the "+" type screw on the transition component.



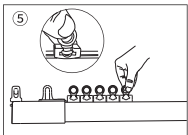
Extend the suitable length.



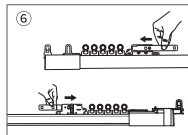
Lock "+" type screw.



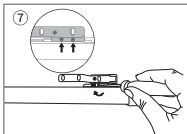
Loose the vice carrier screw.



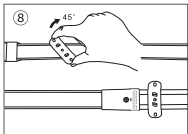
Install rings.



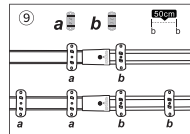
Move carriers to both end side.



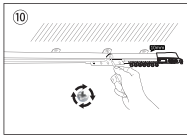
Lock the vice carrier screw.



Install brackets.

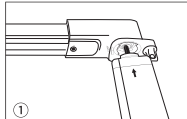


Maximum distance for brackets is 50cm.

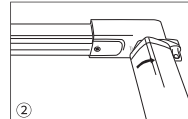


Screw the track to the ceiling.

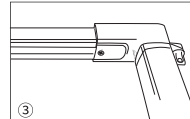
3.Motor installation



The motor output shaft alignment transmission case.



Rotate 90°.



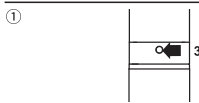
Finished.

Remote control instructions

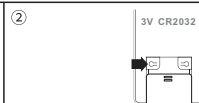
1. Connect or delete the remote control

The remote control doesn't connected with the motor be default,you have to connect before using the electric curtain.

◆Connect the remote control

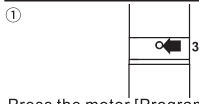


Press the motor [Programming] button for 3 seconds until the LED indicator lights up.



Remote control [Channel Setting] button, the indicator light flashes red for 3 times and then goes off.The code learning is successful.

◆Delete the remote control/ Factory reset



Press the motor [Programming] button for 3 seconds until the LED indicator lights up.



Long press the motor [code] button for more than 7 seconds, the blue light flashes once, restore factory settings.

2.Open/Close/Stop



Press the remote control [open] button, open the curtain, the motor will run to the open limit point, stop at block or stop automatically after 3 minutes.



Press the remote control [close] button, close the curtain, the motor will run to the close limit point, stop at block or stop automatically after 3 minutes.

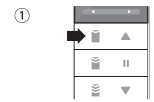


In the process of curtain opening and closing, press the remote control [stop] button, the motor will stop immediately.

◆Automatic working stroke setting

After the motor is powered on fat the first time,the first opening and closing motion will automatically sets the working stroke by collision.

3.Percentage control



Press the button [75%] of the remote control, the curtain will run to 75% of the trip and then stop.



Long press the button [50%] of remote control, the curtain will run to 50% of the trip and then stop.



Press the button [25%] of the remote control, the curtain will run to 25% of the trip and then stop.

4.Custom the percentage control

◆Set the middle stop point 1

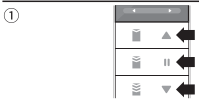


Use the [On], [off], [Stop] buttons to run the curtain to the desired position.



At the same time, press [75%] + [Channel Setting] and set the current position as the middle stop position 1. The motor vibrates once and the motor indicator lights flash once.

◆Set the middle stop point 2



Use the [On], [off], [Stop] buttons to run the curtain to the desired position.



At the same time, press [25%] + [Channel Setting] and set the current position as the middle stop position 2. The motor vibrates once and the motor indicator lights flash once.

◆Set the middle stop point 3



Use the [On], [off], [Stop] buttons to run the curtain to the desired position.



At the same time, press [50%] + [Channel Setting] and set the current position as the middle stop position 3. The motor vibrates once and the motor indicator lights flash once.

5.Direction setting

◆Method 1

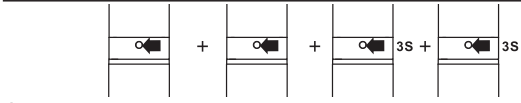


Press motor [programming button] 3s until LED light on,enter learning mode.



Press [channel select]+[Stop] buttons, LED light fast flash 3times,direction setting successfully.

◆ Method 2 (Change direction by programming button)



Short time press twice+ long time press [programming button] twice: short time press (light flash) + short time press(light flash) + long time press for 3 seconds (led light on) + long time press for 3 seconds (Led light flashes two times and then light off),direction change done.